

Capability Statement

Kinetic Contracts





Index

About Us	3
Philosophy	4
Services	5
Project Experience	6-7
Enviromental Statement	8
Contacts	9

KINETIC CONTRACTS

About us

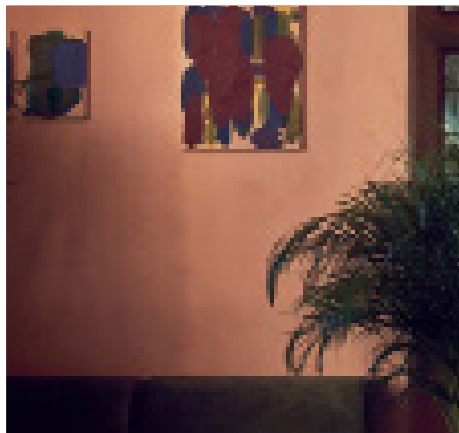
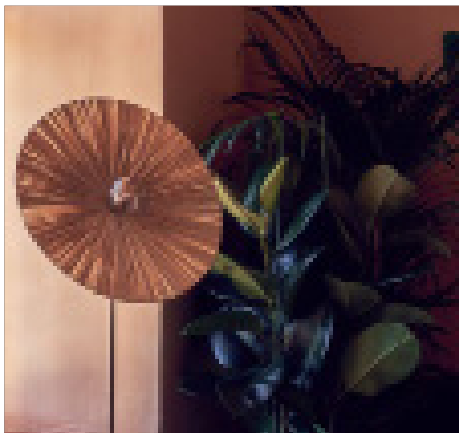
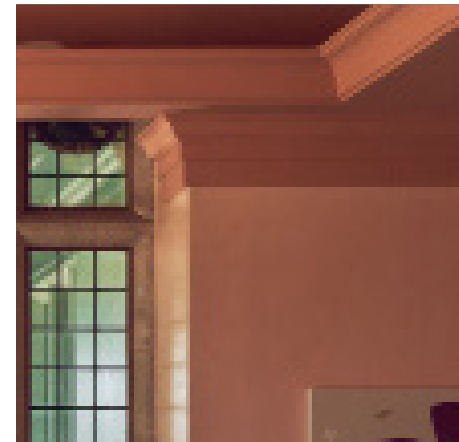
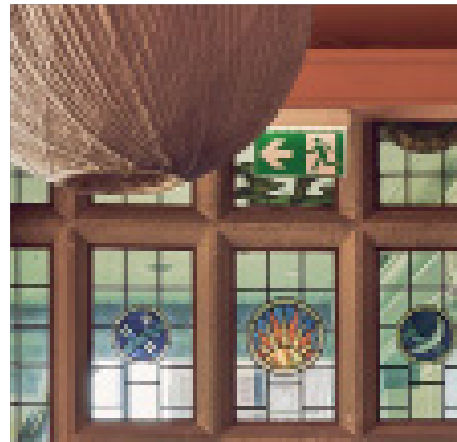
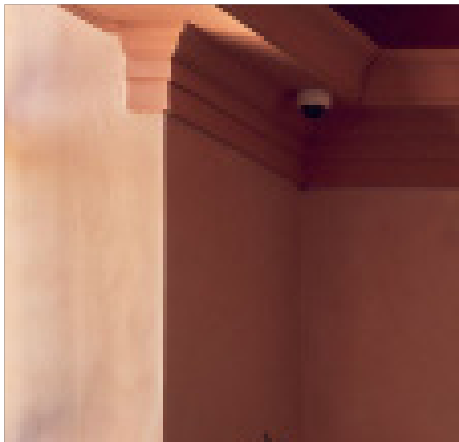


At Kinetic Contracts, we bring over 40 years of experience in delivering high-end commercial and industrial fit-outs and refurbishments across a variety of sectors, including Education, Health, Public, Leisure, and Life Science. Our commitment to quality, precision, and innovation has made us a trusted partner for businesses and organizations seeking to transform their spaces.

With a focus on excellence, we work closely with our clients to understand their vision and deliver projects that enhance functionality, aesthetics, and efficiency across various sectors, including Education, Health, Public, Leisure, and Life Science. Whether it's a cutting-edge office fit-out, an industrial refurbishment, or a bespoke upgrade, we ensure every detail is executed to the highest standard.

Our reputation is built on reliability, craftsmanship, and a deep understanding of the industry. We take pride in delivering projects on time and within budget, all while maintaining a seamless experience for our clients.

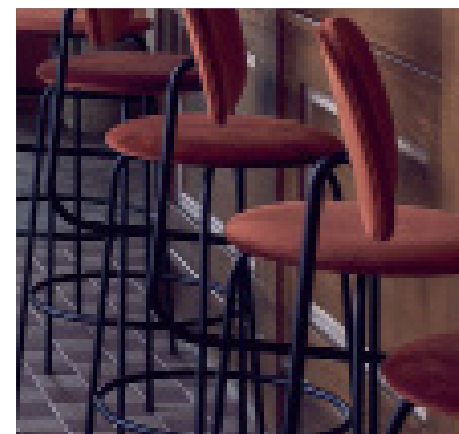
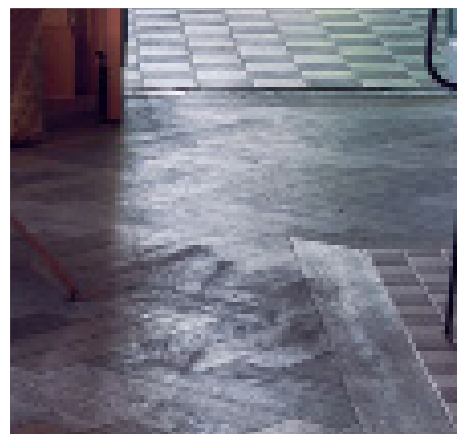
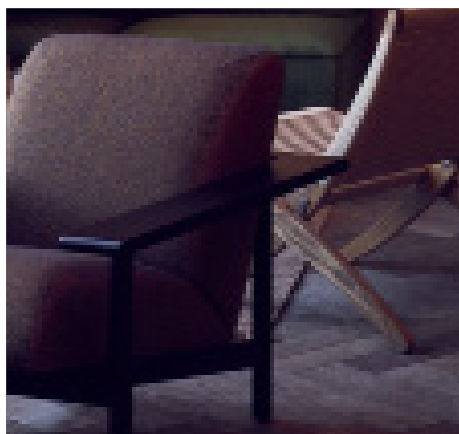
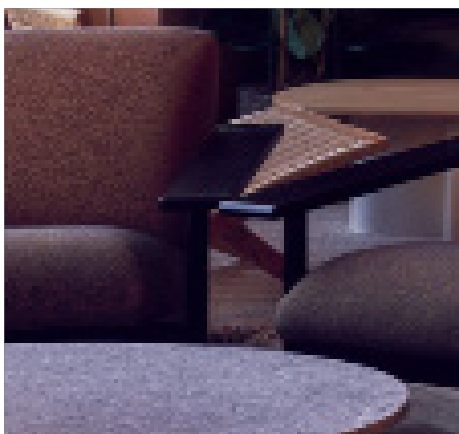
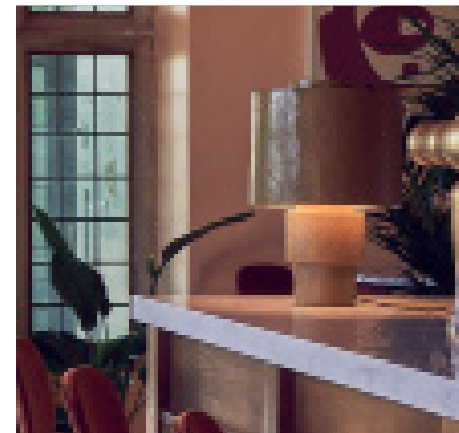
At Kinetic Contracts, we don't just build spaces—we create environments that inspire success.



Philosophy

We put clients first, delivering high-quality fit-outs and refurbishments with excellence and integrity.

Positive, solutions-driven culture ensures seamless execution, creating spaces that inspire success.



Services

Our fit-out and refurbishment services cover a wide range of projects, from small-scale refurbishments to larger, more complex fit-outs valued at up to £1 million.

We work across various sectors delivering high end interior solutions tailored to our clients needs. Kinetic specialises in the following sectors:

- » Commercial
- » Education
- » Industrial
- » Health
- » Public
- » Leisure
- » Life Science



Project Experience



Commercial

An extensive refurbishment of this dated 90,000 sq. ft. office building has transformed Maplewood into a workspace designed for the future.

Internally, three floors have been fitted out to CAT-A standards. Externally, the building has undergone a major overhaul, including the relocation of the entrance to create a striking lobby with full-height projected glazing.



Education

The design and construction of a new double-height extension to the entrance of the main building was completed, along with internal remodelling to future-proof the space.

Internally, a multi-purpose area was created, including a new student hub, LRC area, Employability Hub, ESOL, EFL, Admissions, and Student Support spaces, all designed for easy accessibility for all learners entering the building.



Industrial

This project involved repurposing five arches at Southwark Bridge Road, transforming them from previously unused spaces into functional light industrial units.

It is part of The Arch Company's Project 1000 initiative, a £200 million investment aimed at bringing 1,000 empty or derelict spaces into use by 2030.



Public

Three existing shop units were adapted to create a new library on St Martin's Walk in Dorking. The works included the installation of new services, shelving, and fittings to design a modern library space for the community to enjoy.

Project Experience



Leisure

World Heart Beat's new education centre and performance space in Nine Elms, South-West London. The space has been expertly transformed from a shell and core unit into a state-of-the-art venue featuring high-quality acoustics, a viewing gantry, a recording studio, and dedicated rehearsal rooms.



Health

The project involved delivering essential improvements to the ward's infrastructure, including a complete refurbishment of all 17 bedrooms and a redesign of the bathrooms to enhance accessibility for patients.

The new, high-end ward has been completed following the latest healthcare building guidelines, ensuring the highest possible standards of safety and comfort.



Laboratories

The T-Level facilities at USP College have been significantly upgraded, with a focus on creating a state-of-the-art teaching lab. The project involved stripping out, reconfiguring, and refurbishing the ground and first floors of the Seevic Campus to provide modern, industry-relevant spaces for T-Level Digital, Health, Science, Early Years, and Childcare programs.

Enviromental

It is our company's desire to help build exceptional development's in terms of sustainability and environmental performance. We are committed to demonstrable environmental management and we do this from not only a moral and ethical standpoint on behalf of our directors, staff, our children and future generations but also because it makes good business sense.

The company fully accepts responsibility for operating the business, procuring and installing our works in ways which protect and preserve the environment. Our policy is aimed at minimising the emission of pollutants to air, water and land, and the preservation of natural resources by reducing consumption and using, wherever possible, renewable sustainable resources.

Kinetic Contracts

Kinetic // Contracts



Kinetic Contracts Ltd - 160 Chiltern Drive, Surbiton - KT5 8LS - T 0208 399 4265 - E. info@kineticcontract.co.uk
www.kineticcontracts.com